

## Bulkhead Light Fitting Series 6788

STAHL



- > Suitable for incandescent lamps up to 100 W and halogen lamps up to 150 W
- > Through-wiring possible

E2

www.stahl.de



12797E00

The bulkhead light fitting 6788 is ideally suited for a Zone 2 environment and is suitable for a large ambient temperature range.

Zone	ATEX/GOST					
	0	1	2	20	21	22
For use in			x			

WebCode 6788A

# Bulkhead Light Fitting

## Series 6788

### Selection Table

Version	Lamps	Lampholder	Order number	Weight kg
Bulkhead light fitting Series 6788	up to 150 W	E27	<b>6788/1-2-2</b>	4.000
Note The light fittings are supplied without lamps, see accessories.				

### Explosion Protection

Version	6788 (Zone 2)
Explosion protection Europe (ATEX) Gas	IBExU 06 ATEX B035 Ⓜ II 3G Ex nA II T*

### Certificates and approvals

Certificates	ATEX, Belarus (GOST-B), Kazakhstan (GOST-K) * Temperature class			
Lamps	Lamp wattage	Temperature classes for different orientations		
		Ceiling mounting	Wall mounting	
			horizontal	vertical
Incandescent lamps 230 V	100 W	T2 <sup>1)</sup>	T1	T2
	100 W <sup>2)</sup>	T2 <sup>1)</sup>	T2	T2
	100 W coloured glass	T1 <sup>1)</sup>	T1	T1
	60 W	T2	T2	T2
	60 W (Ta ≤ 60 °C)	T2 <sup>3)</sup>	T2 <sup>3)</sup>	T2 <sup>1)</sup>
	40 W	T2	T2	T2
	25 W	T3	T3	T3
Incandescent lamp 24 V	100 W	T1 <sup>1)</sup>	T1 <sup>1)</sup>	T1 <sup>1)</sup>
	60 W	T2	T2	T2
Halogen lamps 230 V	150 W	T1 <sup>3)</sup>	T1 <sup>3)</sup>	T1
	100 W	T2	T2	T2

<sup>1)</sup> Connection with heat-resistant cable ≥ 85 °C required  
<sup>2)</sup> Lamp with internal reflector  
<sup>3)</sup> Connection with heat-resistant cable ≥ 95 °C required

### Technical Data

<b>Electrical data</b>	230 V AC and 24 V AC / DC					
Rated voltage	230 V AC and 24 V AC / DC					
<b>Luminous Characteristics</b>	Incandescent lamps, E27 lampholder, for 25, 40, 60, 100 W Halogen lamps, E27 lampholder, for 100, 150 W					
Lamps	Incandescent lamps, E27 lampholder, for 25, 40, 60, 100 W Halogen lamps, E27 lampholder, for 100, 150 W					
Note	Only incandescent lamps of the companies OSRAM and RADIUM to DIN 49810 part 5 may be used! Shockproof incandescent lamps are exempt from the EU directive on energy saving.					
Luminous flux	Incandescent lamps			Halogen lamps		
	25 W	40 W	60 W	100 W	100 W	150 W
	200 lm	325 lm	575 lm	1160 lm	1800 lm	2870 lm
Luminous intensity distribution						

# Bulkhead Light Fitting

## Series 6788

### Technical Data

#### Mechanical data

Type of protection	IP64
Protection class	I (with internal and external PE / PA connection)
Material	
Enclosure material	Light cast alloy, grey
Wire guard	Steel wire, galvanized
Glass	Pressed glass, resistant to temperature changes
Cover options	M6, Hexagonal screw; without switch

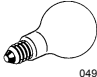

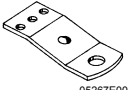
#### Ambient conditions

Ambient temperature	- 20 ... + 40 °C - 20 ... + 60 °C @ 230V/60W
---------------------	---

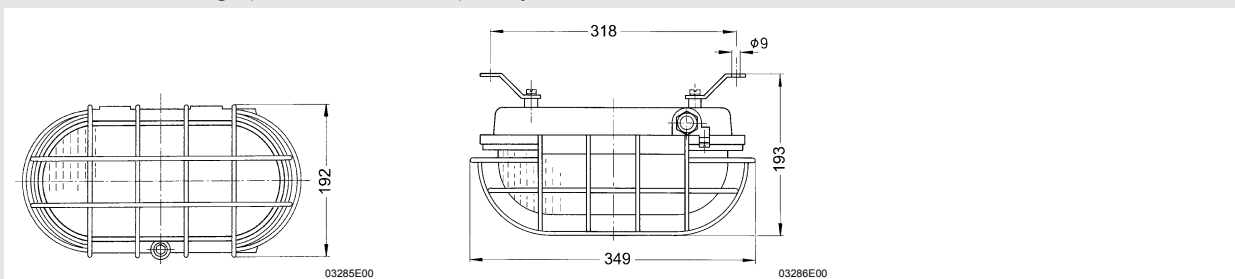
#### Assembly / Installation

Cable entry	1 x M25 x 1.5 cable gland 1 x M25 x 1.5 stopping plug
Connection type	Terminals L1 + N for 2 x 4 mm <sup>2</sup> , flexible/solid PE for 2 x 4 mm <sup>2</sup> , flexible/solid

### Accessories and Spare Parts

Designation	Illustration	Description	Order number	Weight kg
Incandescent lamp	 04958E00	25 W E27 230 V 200 lm	111711	0.040
		40 W E27 230 V 325 lm	111712	0.035
		60 W E27 230 V 575 lm	111713	0.035
		100 W E27 230 V 1160 lm	108853	0.033
		60 W E27 24 V ▽	108860	0.042
		100 W E27 24 V 1160 lm	109340	0.020
Halogen lamps	 05355E00	100 W E27 230 V 1800 lm	207459	0.150
		150 W E27 230 V 2870 lm	207458	0.080
Mounting brackets	 05267E00	1 set	121705	0.115

### Dimensional Drawings (All Dimensions in mm) - Subject to Alterations



We reserve the right to make alterations to the technical data, dimensions, weights, designs and products available without notice. The illustrations cannot be considered binding.